



# DISTRICT PUBLIC SCHOOL & COLLEGE DEPALPUR

*E-Learning Project*

*Summer Task*

*Tutorial Video Links*

*Home Assignments, Worksheets and Activities*

**Academic Session 2020-2021**

## **Subject: Computer Science**



**Class: 2**

*Student's Name:* \_\_\_\_\_

*Father's Name:* \_\_\_\_\_

Week # 03 (6<sup>th</sup> July, 2020 11<sup>th</sup> July, 2020)

(Day 01)

**Activity:**

**Shutting Down Computer**

**Objective:** In this activity students will be able to shut down a computer

**Web Link:** [https://www.youtube.com/playlist?list=PLrO4DffpX5pNV-g\\_SPscNmwsDDfmiZvvl](https://www.youtube.com/playlist?list=PLrO4DffpX5pNV-g_SPscNmwsDDfmiZvvl)

There are 5 steps to switch off a computer.

Step 1: Click on the 'Start' button



Step 2: Click on the 'Shut down' button



Step 3: Wait for the screen to turn blank



Step 4: Switch off the monitor



Step 5: Switch off the electricity



Week # 03 (6<sup>th</sup> July, 2020 11<sup>th</sup> July,2020)

(Day 02)

**Assessment: Switch On and Off Computer**

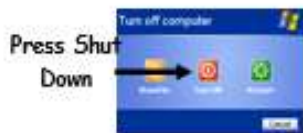
1. Write down the correct number following the right steps on how to **switch on the computer**.



2. Write down the correct number following the right steps on how to **switch off the computer**.



"Shut Down"



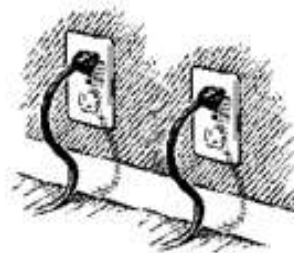
Press Shut  
Down



Press  
Power  
button



Click  
"Start"



**Solution:** [https://www.youtube.com/playlist?list=PLrO4DffpX5pNV-g\\_SPscNmwsDDfmiZvvl](https://www.youtube.com/playlist?list=PLrO4DffpX5pNV-g_SPscNmwsDDfmiZvvl)

**Topic: Computer Hardware**

**Objective: In this lesson students will be able to identify hardware of Computer**

**Web Link:** [https://www.youtube.com/playlist?list=PLrO4DffpX5pNV-g\\_SPscNmwsDDfmiZvvl](https://www.youtube.com/playlist?list=PLrO4DffpX5pNV-g_SPscNmwsDDfmiZvvl)

**Q:4 What is Computer Hardware?**

**Answer:**

Hardware is the **physical parts of a computer** that we can **touch**, such as **the keyboard, mouse printer and the screen** etcetera.



**Learn and write answer on below lines**

---

---

---

---

---

---

---

---

---

---

**Assessment:**

Give any three examples of computer hardware.

1. \_\_\_\_\_
2. \_\_\_\_\_
3. \_\_\_\_\_

**Topic: Computer software**

**Objective: In this lesson students will be able to know about Computer Software**

**Web Link:** [https://www.youtube.com/playlist?list=PLrO4DffpX5pNV-g\\_SPscNmwsDDfmiZvvl](https://www.youtube.com/playlist?list=PLrO4DffpX5pNV-g_SPscNmwsDDfmiZvvl)

**Q: 5.What is Computer Software?**



**Answer:**

All the **instructions** for the computer designed to **solve problems** or **do different tasks**.

**Examples are:**

Microsoft Word, Internet Explorer, and Windows.



**Learn and write answer on below lines**

---

---

---

---

---

---

---

---

---

---

**Assessment:**







1. Give any three examples of computer Software.

1. \_\_\_\_\_
2. \_\_\_\_\_
3. \_\_\_\_\_

2.

## Identify Hardware and Software

One is done for you.

Name	Image	Hardware	Software	Peer Assessment
Monitor		✓		Monitor is a hardware
Windows ( Operating System )				
Mouse				
Printer				
Word Processor				
Keyboard				

**Solution:** [https://www.youtube.com/playlist?list=PLrO4DffpX5pNV-g\\_SPscNmwsDDfmiZvvl](https://www.youtube.com/playlist?list=PLrO4DffpX5pNV-g_SPscNmwsDDfmiZvvl)

**Topic: Parts of computer**

**Objective: In this lesson students will be able to recognize parts of computer**

**Web Link:** [https://www.youtube.com/playlist?list=PLrO4DffpX5pNV-g\\_SPscNmwsDDfmiZvvl](https://www.youtube.com/playlist?list=PLrO4DffpX5pNV-g_SPscNmwsDDfmiZvvl)

**Q: 6. What are the main four parts of computer?**

**Answer:**

**1. Monitor**

It shows words and pictures made by the computer



**2. System Unit**

A tower called System Unit or CPU that holds other computer parts.



**3. Mouse**

Items selected on monitor screen by pressing the mouse buttons (called clicking).It is used with computer.



**4. Keyboard**

It has keys that are used to type letters and numbers in Computer.



**Learn and write answer on below lines**

---

---

---



---

---

---

---

---

---

---

---

---

---

---

---

---

---

---

---

---

---

---

---

---

---

---

---

**Week # 05 (20<sup>th</sup> July, 2020 25<sup>th</sup> July, 2020)**

**(Day 02)**

**Assessment:**

**1. Fill in the blanks.**

1. Monitor shows words and pictures made by the \_\_\_\_\_.
2. A tower called CPU that \_\_\_\_\_ other computer parts.
3. Keyboard has keys that are used to type \_\_\_\_\_ and \_\_\_\_\_ into Computer.
4. Items can be move or select on monitor screen by pressing the \_\_\_\_\_.

**2.**

Match the picture with the word



**mouse**

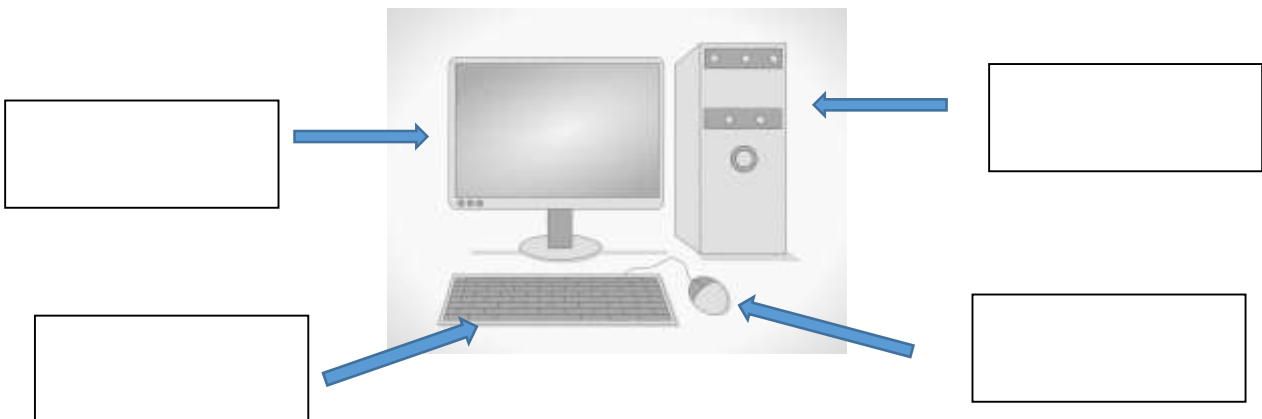
**screen**

**monitor**

**CPU**

**keyboard**

3. Label the diagram below



**Write three lines about the diagram.**

---

---

---

---

---

---

---

---

---

---

---

---

**Solution:**

**Web Link:** [https://www.youtube.com/playlist?list=PLrO4DffpX5pNV-g\\_SPscNmwsDDfmiZvvl](https://www.youtube.com/playlist?list=PLrO4DffpX5pNV-g_SPscNmwsDDfmiZvvl)

**Week # 06 (27<sup>th</sup> July, 2020 - 30<sup>th</sup> July, 2020)**

**(Day 01)**

**Topic: Start MS Paint**

**Objective: Students will be able to start MS Paint**

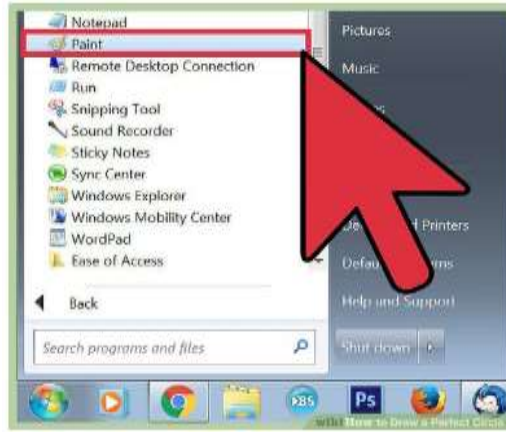
**Web Link**

To Start MS Paint

Step 1: Click on the start button



Step 2: Then, click on MS Paint



The MS Paint will be start/open.



Assessment:

Write the steps to Start. MS Paint

---

---

---

---

---

---

---

---

---

---

---

---

---

---

---

---

---

---

---

---

---

---

---

---

---

---

**Solution:**

**Web link:** [https://www.youtube.com/playlist?list=PLrO4DffpX5pNV-g\\_SPscNmwsDDfmiZvvl](https://www.youtube.com/playlist?list=PLrO4DffpX5pNV-g_SPscNmwsDDfmiZvvl)