



DISTRICT PUBLIC SCHOOL & COLLEGE DEPALPUR

E-Learning Project

Summer Task

Tutorial Video Links

Home Assignments, Worksheets and Activities

Academic Session 2020-2021

Subject: Computer Science



Class: 4

Student's Name: _____

Father's Name: _____

Week # 03 (6th July, 2020 11th July,2020)

(Day 01)

Topic: Input Devices

Objective: Dear students you will be able to recognize the input devices.

Web Link: https://www.youtube.com/playlist?list=PLrO4DffpX5pPp_jwrjJNuzQ6a7KZsyVfx

Q: 3. Define Input Devices ?

Answer:

Devices which is used to enter data into a computer are called input devices.

Examples: Keyboard, Mouse, Scanner, Webcam , Microphone.



Learn and write answer on below lines.

Week # 03 (6th July, 2020 11th July,2020)

(Day 02)

Assessment:

1. Tick items which are used to input data to a computer.

Monitor	Speaker	Keyboard
Scanner	Joystick	Printer
	Mouse	Headphone
	Microphone	Digital Camera

2. List any three input devices.

Answer:

1. _____
2. _____
3. _____

3. **Fill in the blanks**

1. Devices which are used to enter data is called _____.
2. Keyboard is an _____ device.

Answer Key

Web Link: https://www.youtube.com/playlist?list=PLrO4DffpX5pPp_jwrjJNuzQ6a7KZsyVfx

4. Label the diagrams









Week # 04 (13th July, 2020 18th July,2020)

(Day 01)

Topic: Keyboard

Objective: Students will be able to recognize keyboard and its keys

Web Link: https://www.youtube.com/playlist?list=PLrO4DffpX5pPp_jwrjNuzQ6a7KZsyVfx

Q: 4. What is Keyboard?

Answer:

Keyboard is the most commonly used input device it allows a user to type words, numbers or symbols into the computer.



ComputerHope.com

Learn and write answer on below lines.

Week # 04 (13th July, 2020 18th July,2020)

(Day 02)

Assessment:

1. Fill in the blanks.

1. Keyboard is an _____ device.

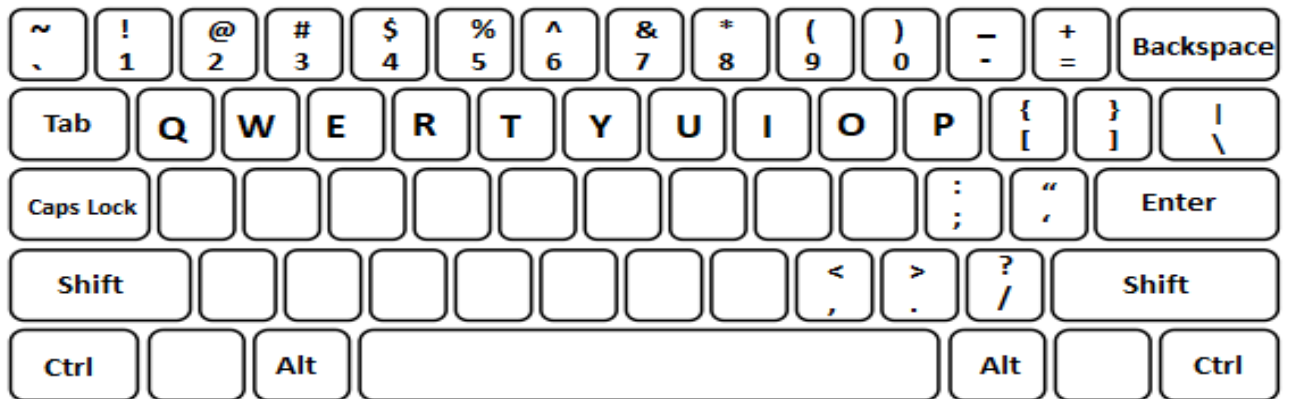
2. Keyboard is used to _____ words.

3. Keyboard is use to type words_____ or symbols into the computer.

Activity:

Fill in the Missing Keys on the Keyboard

Fill in the missing keys on the keyboard.



Answer Key

Web Link: https://www.youtube.com/playlist?list=PLrO4DffpX5pPp_jwrjJNuzQ6a7KZsyVfx

Week # 05 (20th July, 2020 25th July,2020)

(Day 01)

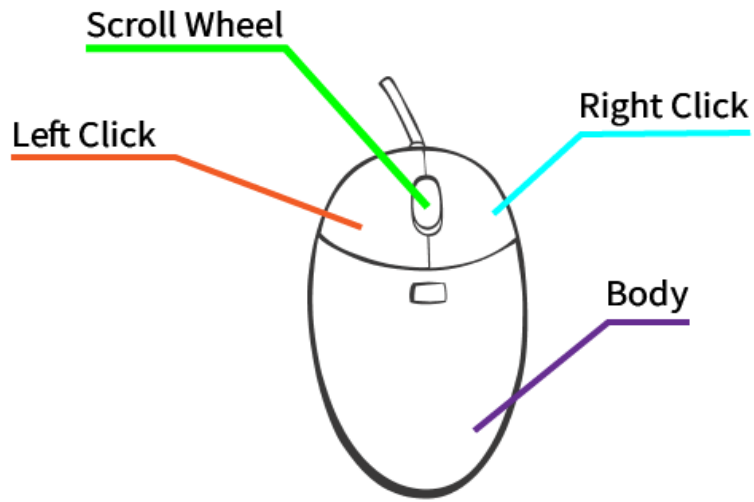
Topic: Mouse

Objective: Dear Students you will be able to use a computer mouse

Web Link: https://www.youtube.com/playlist?list=PLrO4DffpX5pPp_jwrjJNuzQ6a7KZsyVfx

Q: 5. What is Mouse?

Mouse is an input device that is connected to system unit by a wire .It enables a user to select commands quickly and perform tasks in computer.



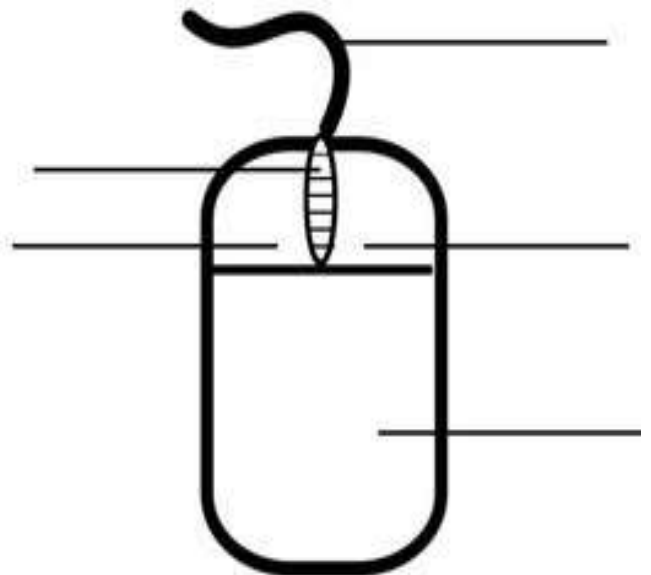
Learn and write answer on below lines.

Week # 05 (20th July, 2020 25th July,2020)

(Day 02)

Assessment:

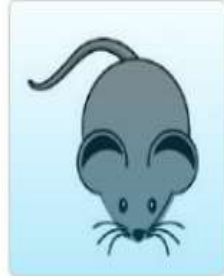
1. Label the computer mouse.



2. Learn More about a Computer Mouse

Activity:

A. Which one is a **computer mouse**?



B. Place the options under the correct picture.

It lives in a hole.

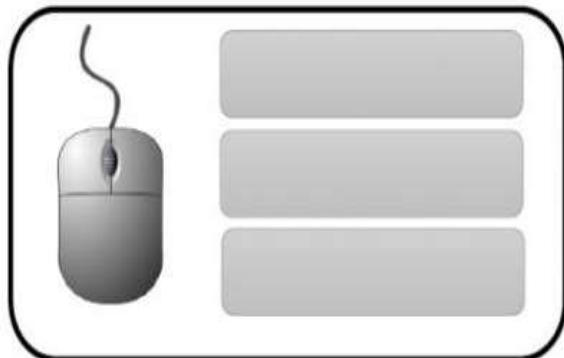
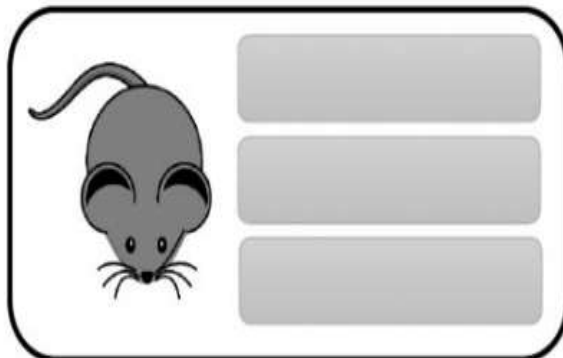
It helps to draw.

It eats grains.

It is kept on a mouse pad.

It runs very fast.

It works on a click



Answer key:

Web Link: https://www.youtube.com/playlist?list=PLrO4DffpX5pPp_jwrjJNuzQ6a7KZsyVfx

Week # 06 (27th July, 2020 - 30th July,2020)

(Day 01)

Topic: Scanner

Objective: Dear Students you will be able to know about scanner.

Web Link: https://www.youtube.com/playlist?list=PLrO4DffpX5pPp_jwrjJNuzQ6a7KZsyVfx

Q: 6.What is Scanner?

Answer:

Scanner is an input device which is used to scan pictures, images, documents etc.



Learn and write answer on below lines.

Week # 06 (27th July, 2020- 30th July,2020)

(Day 02)

Assessment:

Word search Puzzle

Find Scanner



Assessment: Input Devices

Name the computer part and write down the function of it



Name of this part?

Function of this part:- _____



Name of this part?

Function of this part:- _____



Name of this part?

Function of this part:- _____
